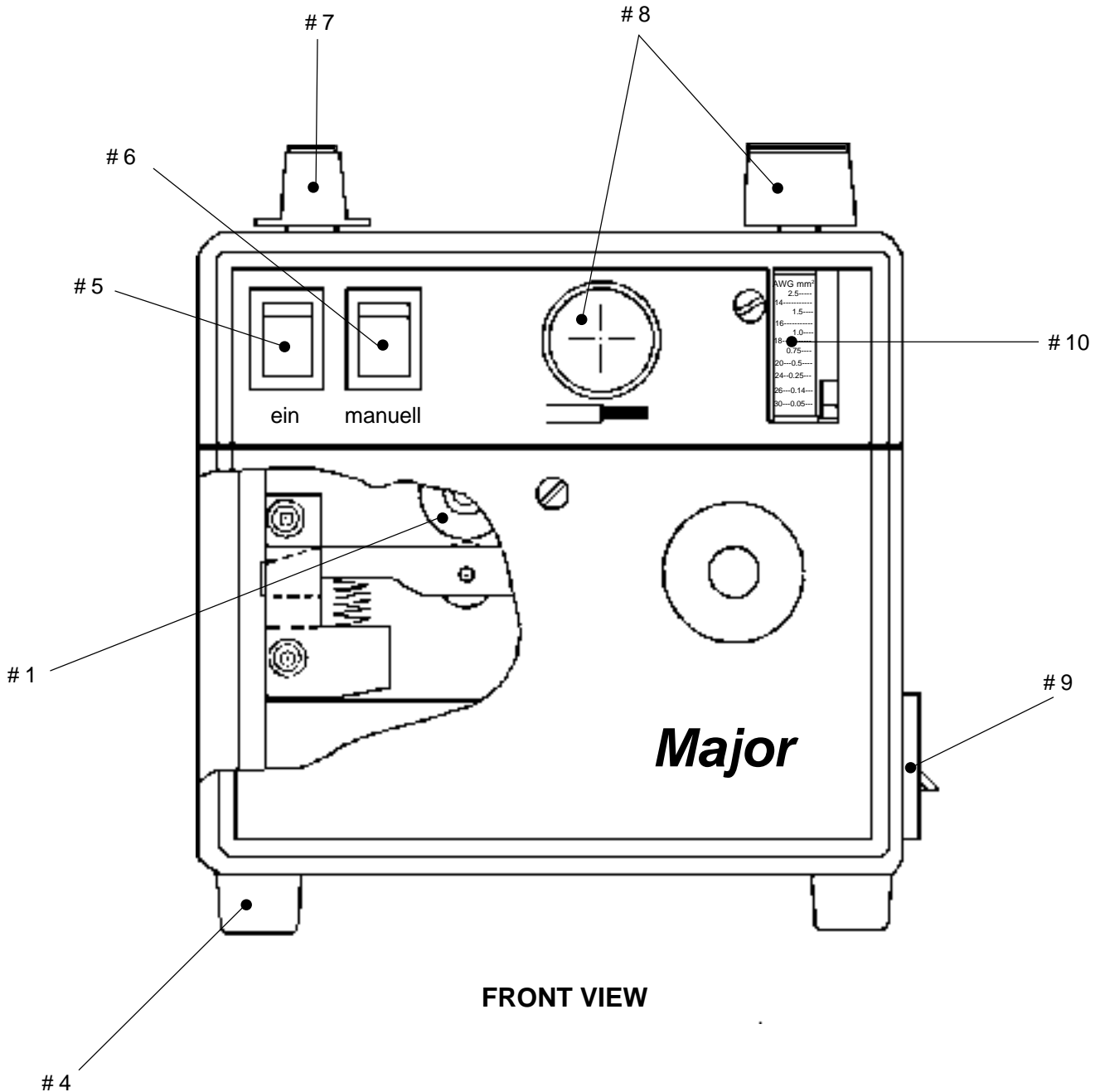


# MAJOR 5001 WIRE STRIPPER



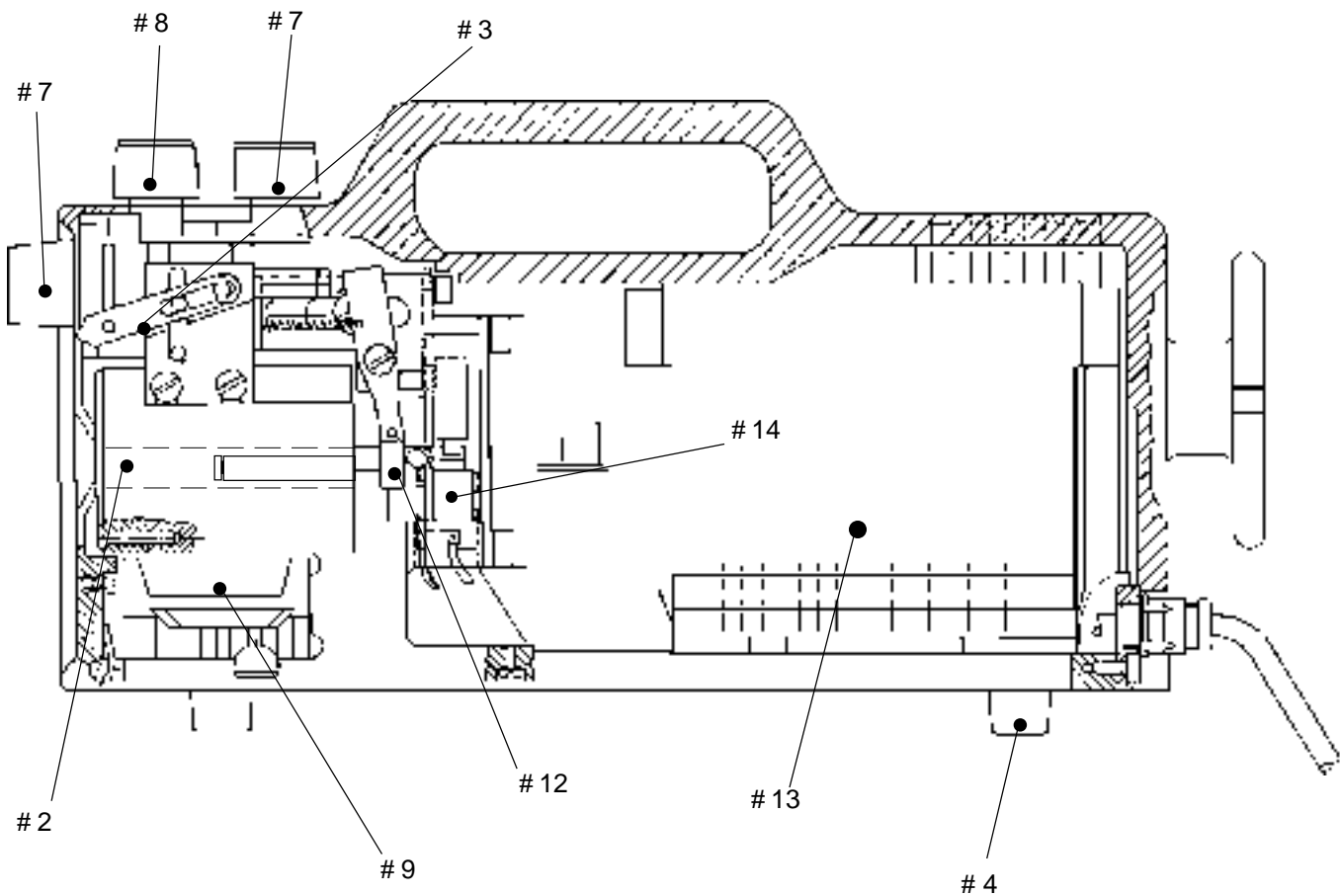
FRONT VIEW

**FOR IMMEDIATE ORDER & PRODUCT INFORMATION CALL 800-966-2345**

\* All specifications & pricing are subject to change without notice.

**33801 CURTIS BLVD. #110 EASTLAKE, OH 44095**  
**PH (440) 942-0054 FAX (440) 942-2102**

# MAJOR 5001 WIRE STRIPPER



**SIDE VIEW**

**FOR IMMEDIATE ORDER & PRODUCT INFORMATION CALL 800-966-2345**

\* All specifications & pricing are subject to change without notice.

**33801 CURTIS BLVD. #110 EASTLAKE, OH 44095  
PH (440) 942-0054 FAX (440) 942-2102**



# MAJOR 5001 WIRE STRIPPER

## PARTS LISTS

ITEM #	PART NUMBER	DESCRIPTION
1	5001 - 7000	CLAMPING CAM (KIT)
1	5001 - 7000	STRIPPING CAM (KIT)
1	5001 - 7000	CUTTING CAM (KIT)
1	5001 - 7000	SHIFTING CAM (KIT)
2	5001 - 1000	CLAMP HEAD .160 (STANDARD)
3	5001 - 8001	WIRE POINTER
4	5001 - 4100	PLASTIC MACHINE FEET
5	5001 - 6000	ON/OFF SWITCH
6	5001 - 0002	MANUEL SWITCH
7	5001 - 014	INSULATION KNOB
8	5001 - 0013	STRIP DIA / STRIP LENGTH KNOB
9	5001 - 2000	BLUE SCRAP DRAWER
10	5001 - 4006	STRIP DIA. GUAGE
11	5001 - 4002	STRIP LENGTH GUAGE
12	5001 - 5000	TWO WIRE SENSOR
13	5001 - 0401	CIRCUIT BOARD
14	5001 - 6000	SNAP SWITCH

**FOR IMMEDIATE ORDER & PRODUCT INFORMATION CALL 800-966-2345**

\* All specifications & pricing are subject to change without notice.

**33801 CURTIS BLVD. #110 EASTLAKE, OH 44095  
PH (440) 942-0054 FAX (440) 942-2102**

# MAJOR 5001 WIRE STRIPPER

## WIRE STRIPPER

P/N: #5001



## BLADES

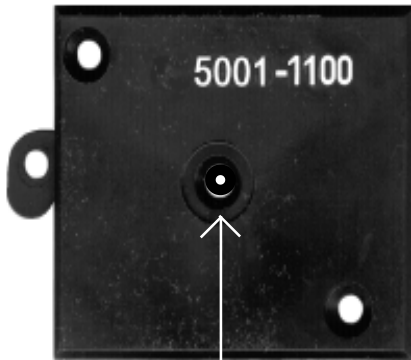
P/N: #5001 - 30021



(4 BLADES PER SET / INCLUDES SCREWS)

## CLAMPING HEAD .060 INCHES

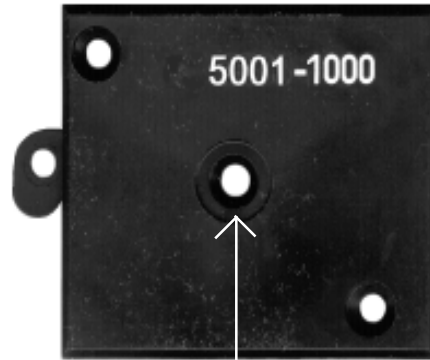
P/N: #5001 - 1100



(.060 INCH DIA. )

## CLAMPING HEAD .160 INCHES

P/N: #5001 - 1000



(.160 INCH DIA. )

**FOR IMMEDIATE ORDER & PRODUCT INFORMATION CALL 800-966-2345**

\* All specifications & pricing are subject to change without notice.

**33801 CURTIS BLVD. #110 EASTLAKE, OH 44095**  
**PH (440) 942-0054 FAX (440) 942-2102**

# MAJOR 5001 WIRE STRIPPER

## C A M S E T

P/N: #5001 - 7000



(INCLUDES ALL 4 CAMS)

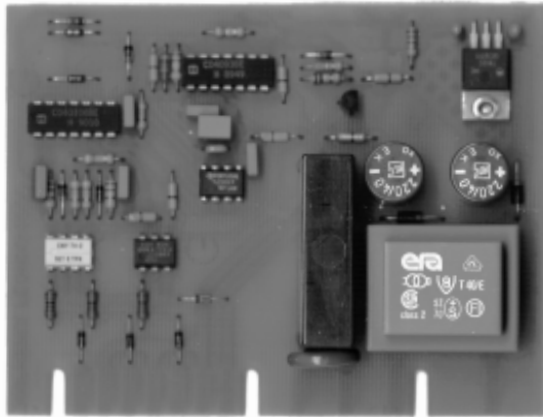
## T W O W I R E S E N S O R

P/N: #5001 - 5000



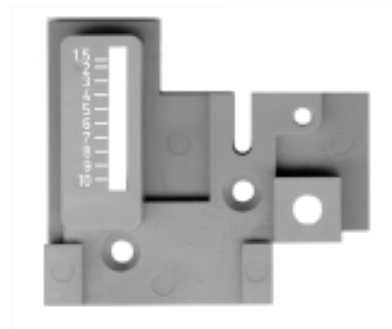
## P C C O N T R O L L E R B O A R D

P/N: #5001 - 0401



## S T R I P L E N G T H G A U G E

P/N: #5001 - 4002



**FOR IMMEDIATE ORDER & PRODUCT INFORMATION CALL 800-966-2345**

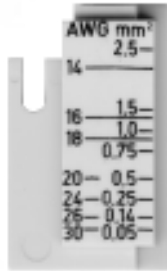
\* All specifications & pricing are subject to change without notice.

**33801 CURTIS BLVD. #110 EASTLAKE, OH 44095**  
**PH (440) 942-0054 FAX (440) 942-2102**

# MAJOR 5001 WIRE STRIPPER

## STRIP DIAMETER GAUGE

P/N: #5001 - 4006



## SNAP SWITCH

P/N: #5001 - 6000

NO PICTURE

Located below drive shaft in front of motor. Red switch with roller.

## MANUEL SWITCH

P/N: #5001 - 0002



## STRIP DIA. KNOB /STRIP LENGTH KNOB

P/N: #5001 - 0013



**FOR IMMEDIATE ORDER & PRODUCT INFORMATION CALL 800-966-2345**

\* All specifications & pricing are subject to change without notice.

**33801 CURTIS BLVD. #110 EASTLAKE, OH 44095**  
**PH (440) 942-0054 FAX (440) 942-2102**

## MAJOR 5001 WIRE STRIPPER

### STRIP INSULATION KNOB

P/N: #5001 - 014



### ON-OFF SWITCH

P/N: #5001 - 6000



### WIRE POINTER

P/N: #5001 - 8001



### PLASTIC MACHINE FEET

P/N: #5001 - 4100



## 5001 FULL SERVICE REPAIR CENTER

### INSTRUCTIONS FOR REPAIR

1. SHIP UNIT WITH A FULL DESCRIPTION OF MACHINES MALFUNCTIONS.
2. INCLUDE CONTACT PERSON, PHONE NUMBER, RETURN SHIPPING ADDRESS.
3. THE MACHINE WILL BE EVALUATED AND A REPAIR AMOUNT WILL BE GIVEN.
4. BEFORE ANY WORK IS PERFORMED A PURCHASE ORDER MUST BE ISSUED.

**FOR IMMEDIATE ORDER & PRODUCT INFORMATION CALL 800-966-2345**

\* All specifications & pricing are subject to change without notice.

**33801 CURTIS BLVD. #110 EASTLAKE, OH 44095  
PH (440) 942-0054 FAX (440) 942-2102**